

300 Years of Ancestral History

Ancestral Tree

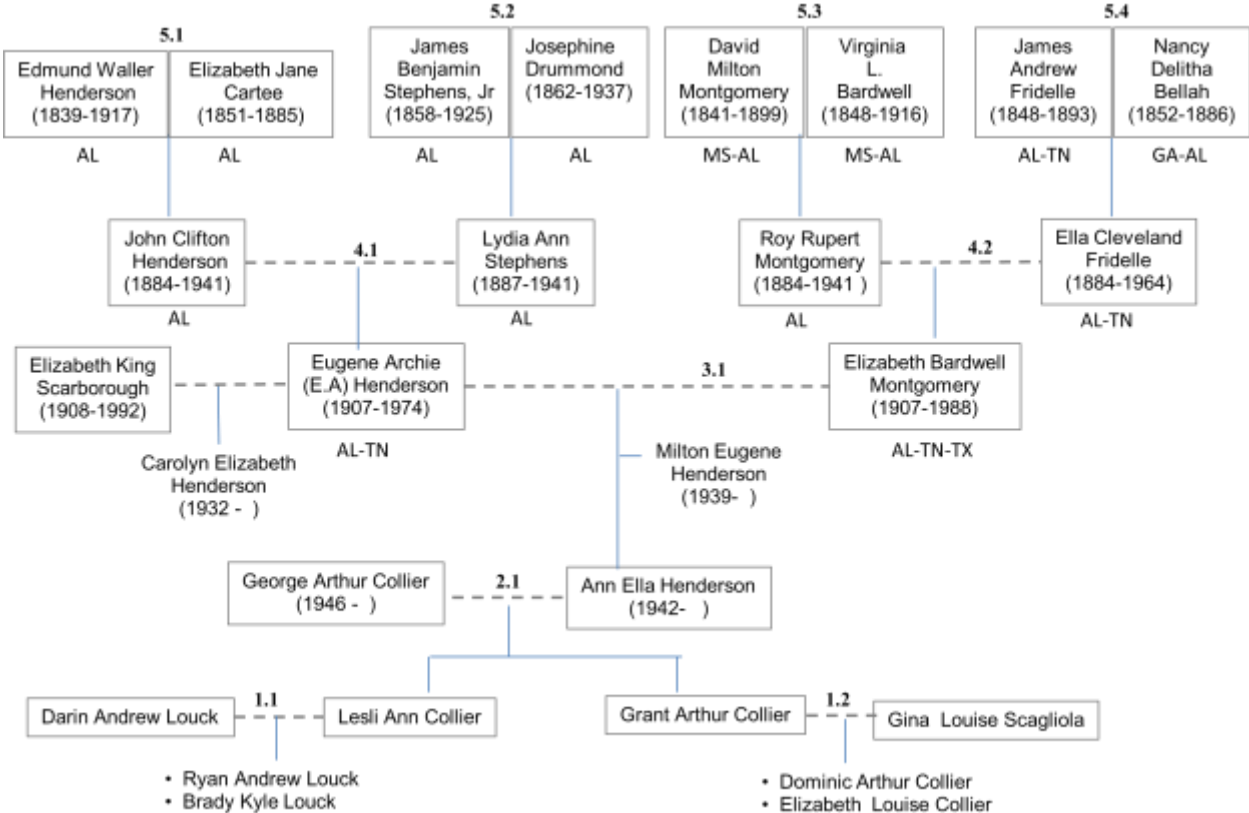
For

Ann Ella (Henderson) Collier

Introduction

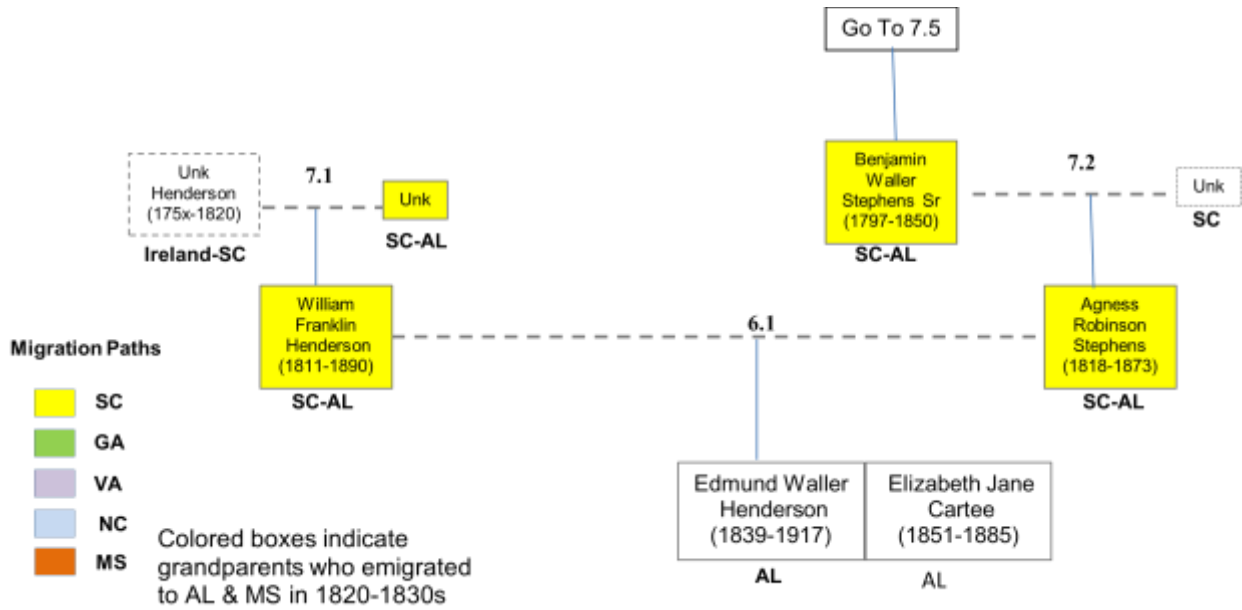
1. Ann's Ancestral Tree is arranged as a "hierarchy of married couples" with a "generation number" assigned to each. Ann's grandchildren are designated as Generation 0.x with Ann and George's generation designated as "Generation 2.x".
2. This Ancestral Tree is intended to include each set of Ann's grandparents who actually lived in America. Currently, there is no attempt to trace her ancestors who lived and died in the 'Old Country'.
3. Ann's GGGrandparents were unusual in that all 16 of them emigrated to Alabama and Mississippi in the 1820s. Her ancestral tree uses color codes to enhance identification of which state the individual emigrated from.
4. Included with each individual in Ann's Ancestral Tree is the state in which that individual lived and died. Given state of transportation before 1850, the families of each couple must have been nearby neighbors in order for them to meet and marry.

Ann's Ancestral Tree (The Younger Generations)



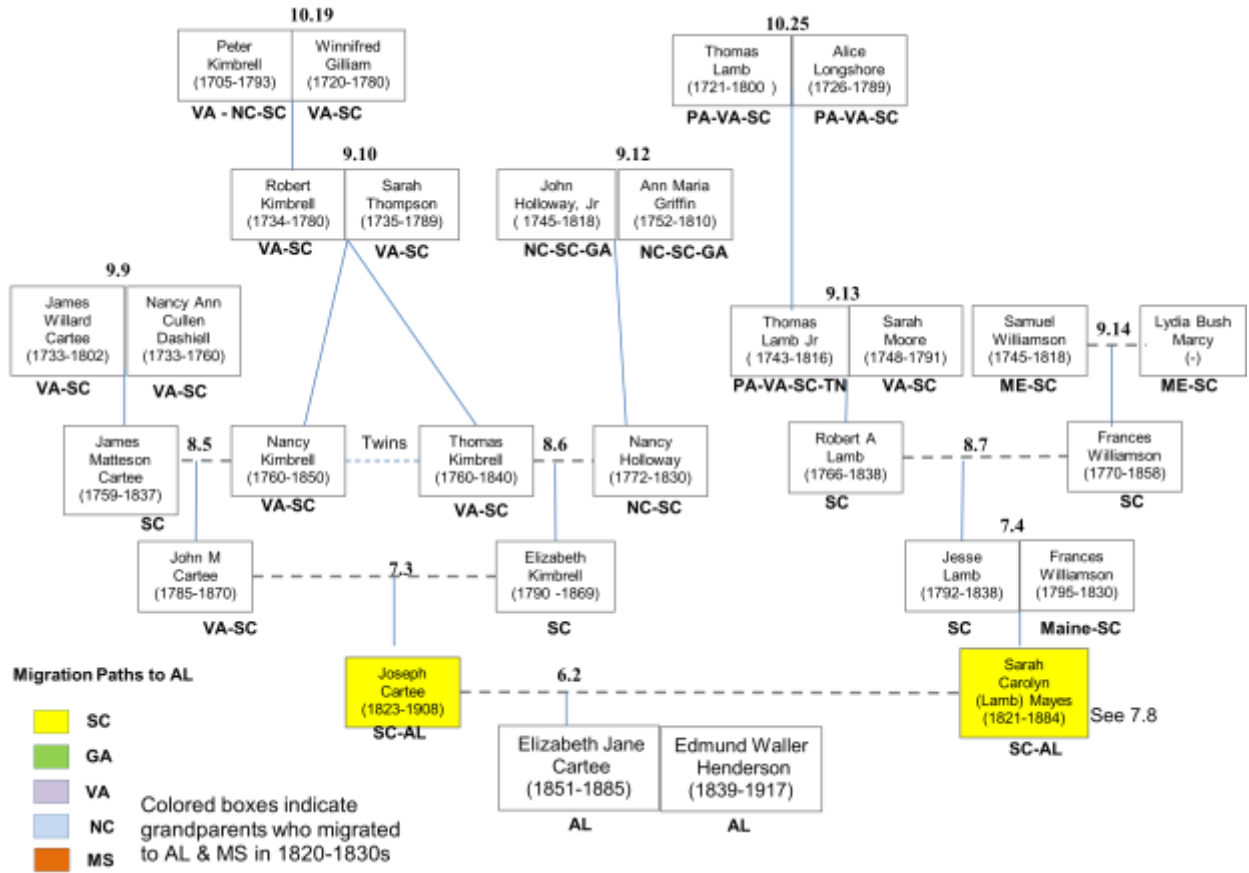
Ann's Ancestral Tree

(Lineage of Paternal GGrandfather Edmund Waller Henderson)



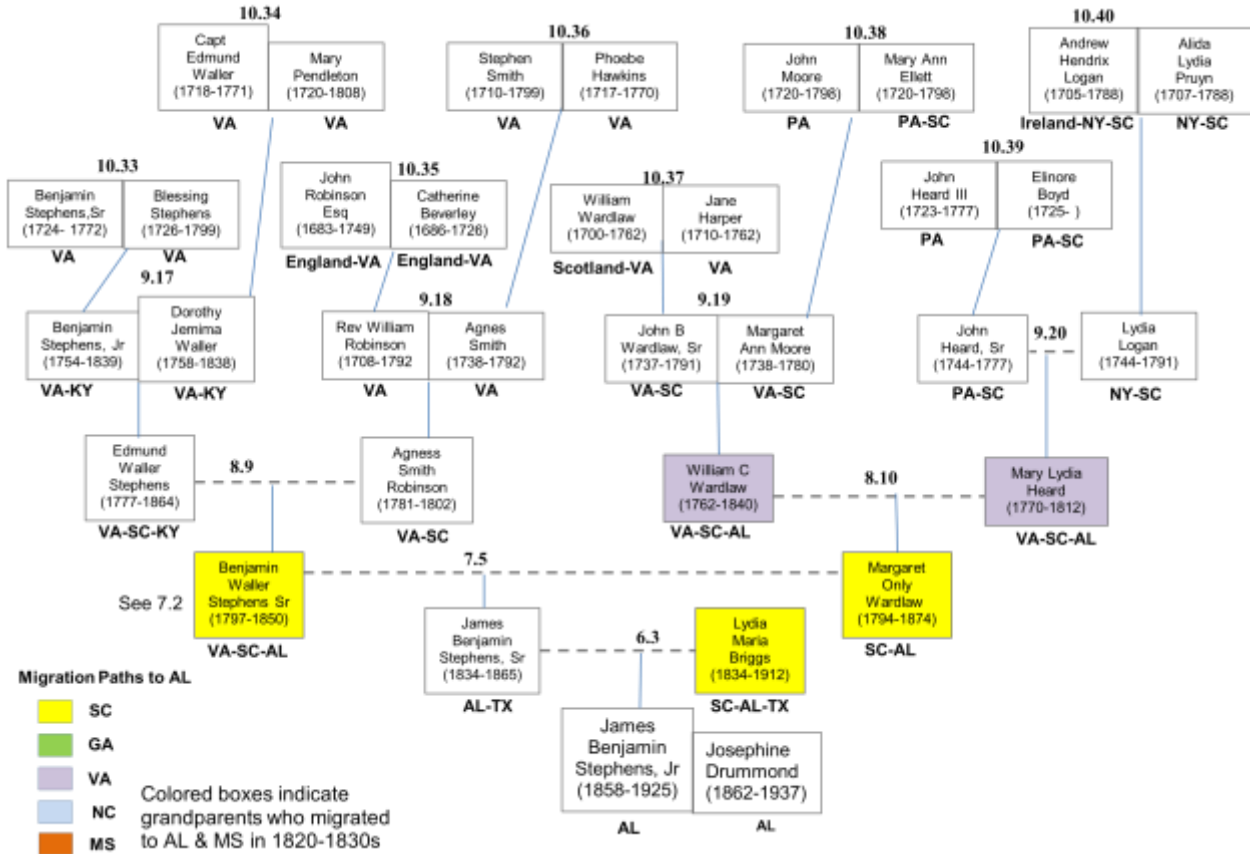
Ann's Ancestral Tree

(Lineage of Paternal GGrandmother Elizabeth Cartee)



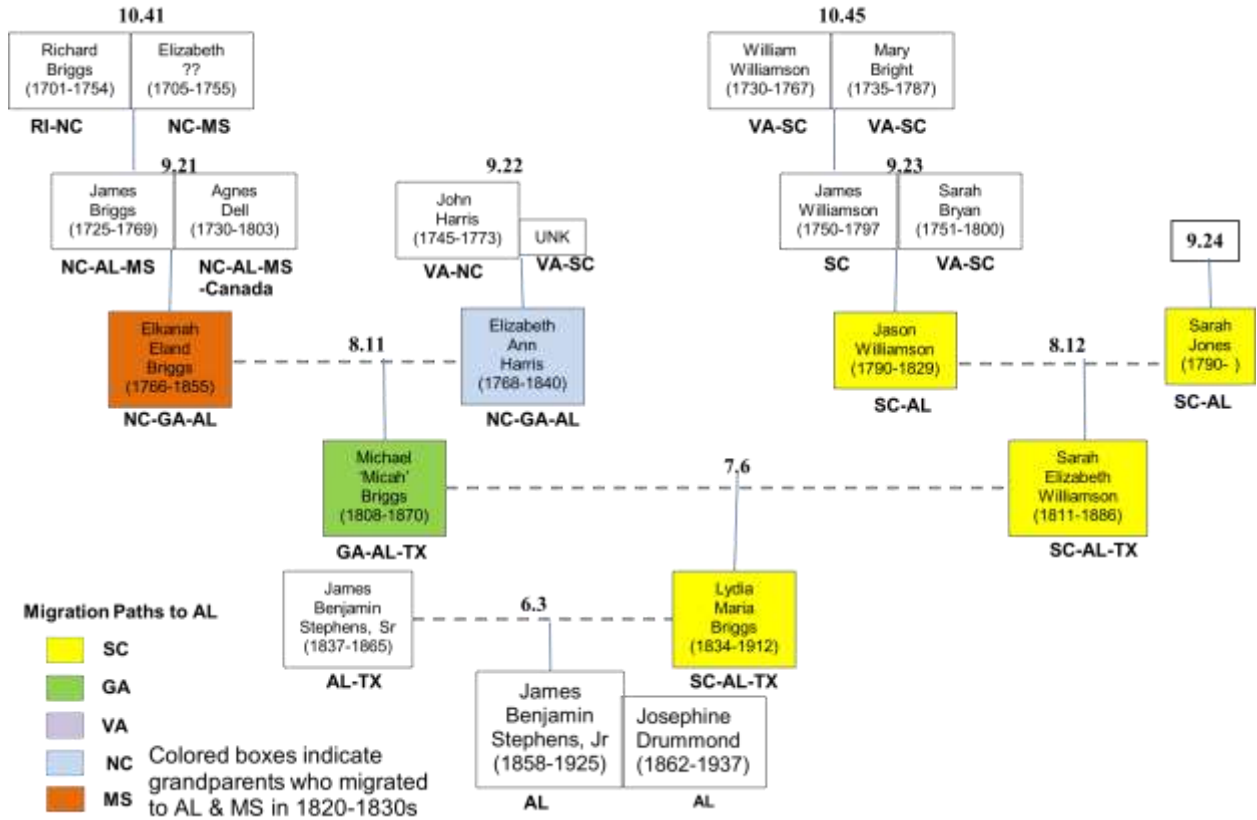
Ann's Ancestral Tree

(Lineage of Paternal GGrandfather James Benjamin Stephens Jr - Pg 1)



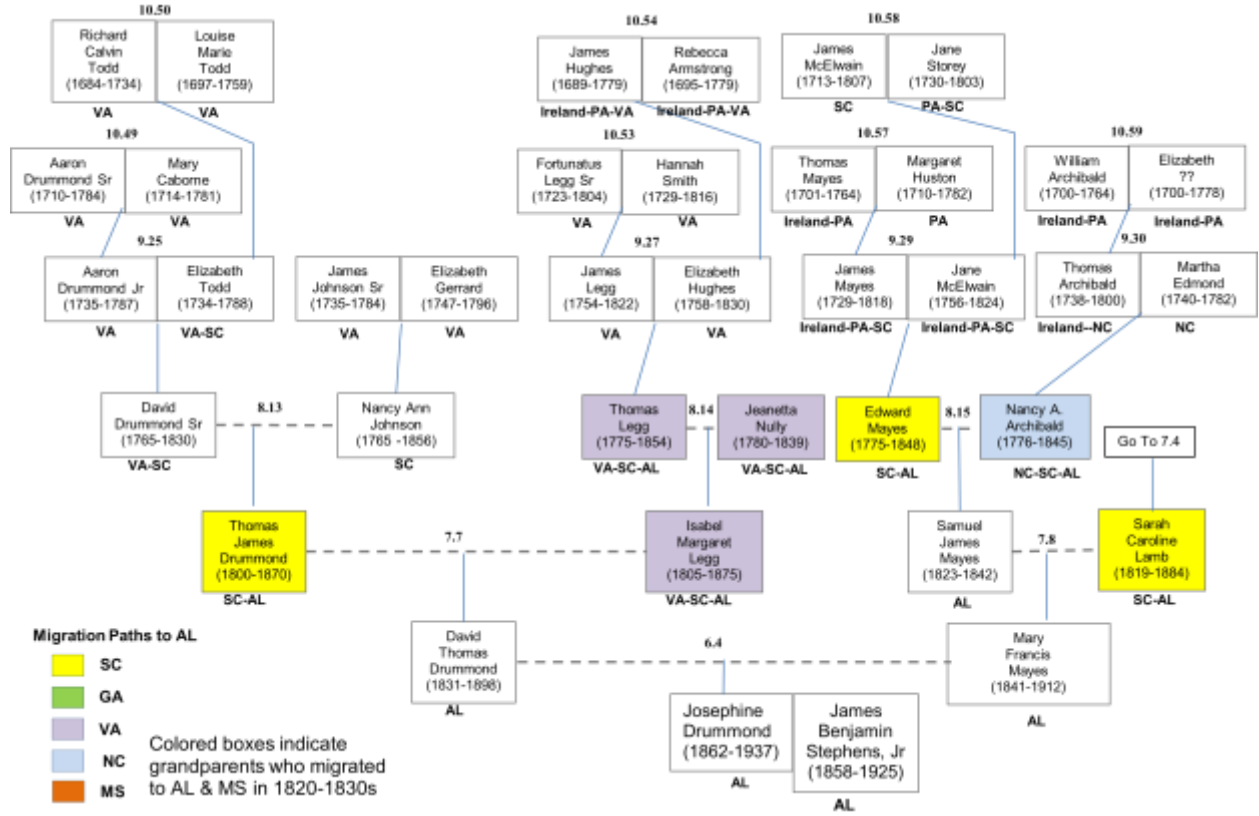
Ann's Ancestral Tree

(Lineage of Paternal GGrandfather James Benjamin Stephens, Jr - p2)



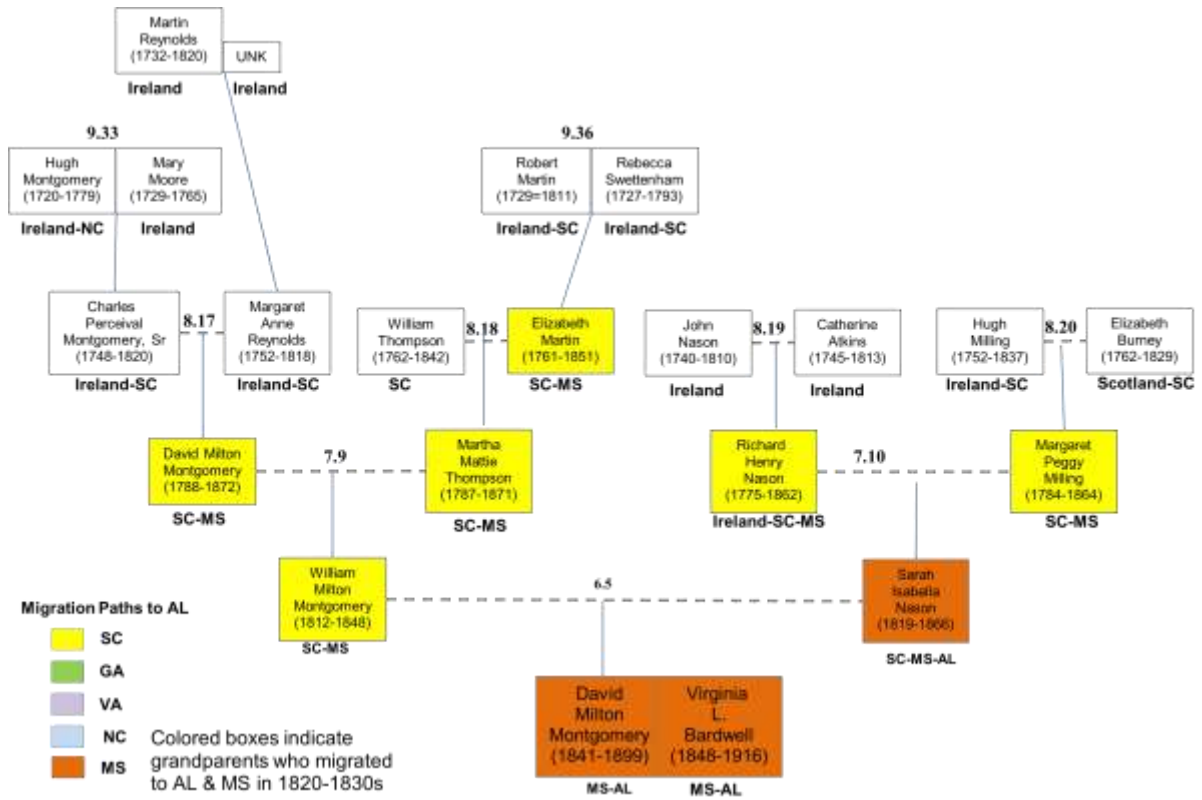
Ann's Ancestral Tree

(Lineage of Paternal GGrandmother Josephine Drummond)



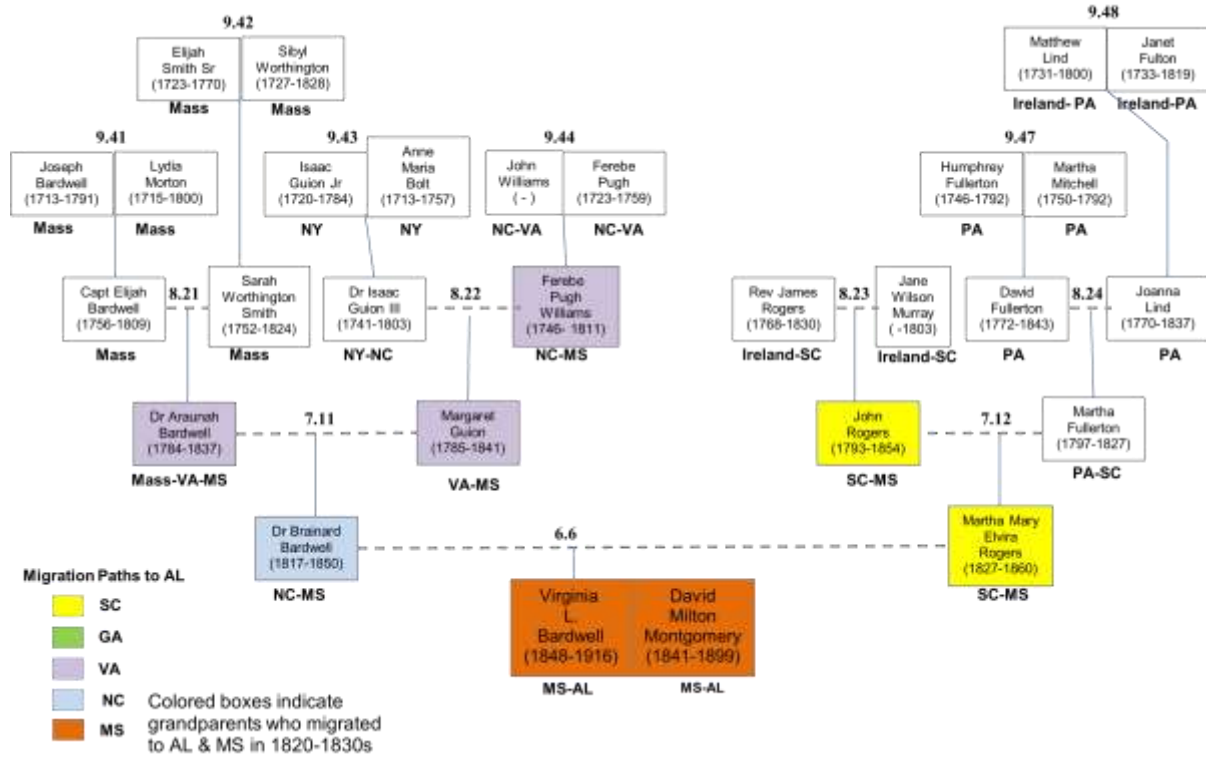
Ann's Ancestral Tree

(Lineage of Maternal GGrandfather David Milton Montgomery)



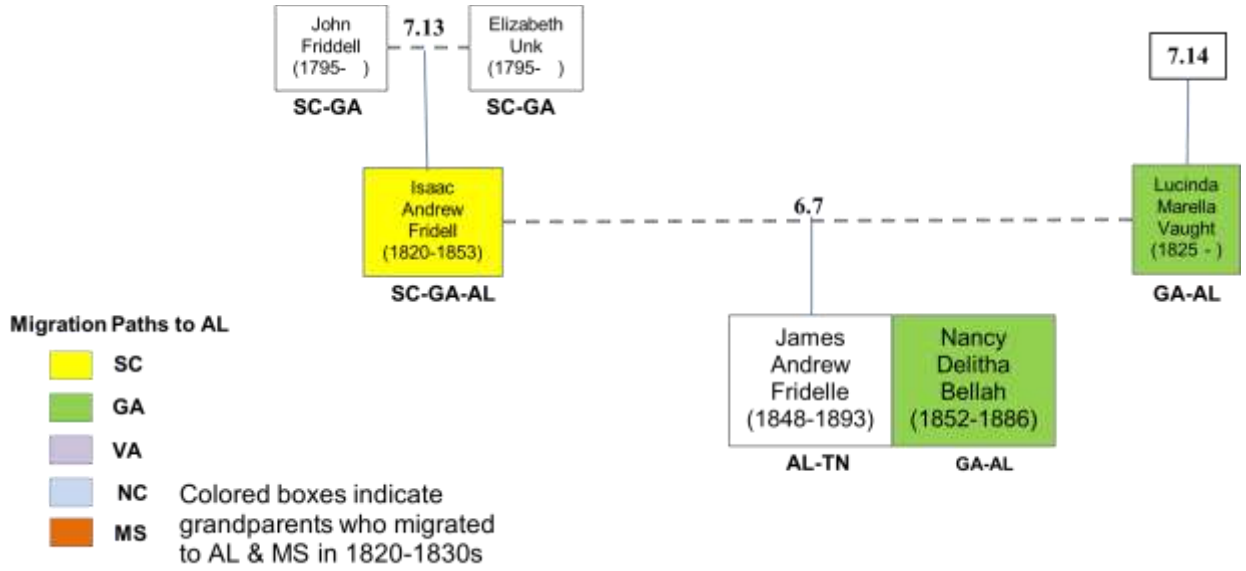
Ann's Ancestral Tree

(Lineage of Maternal GGrandmother Virginia L Bardwell)



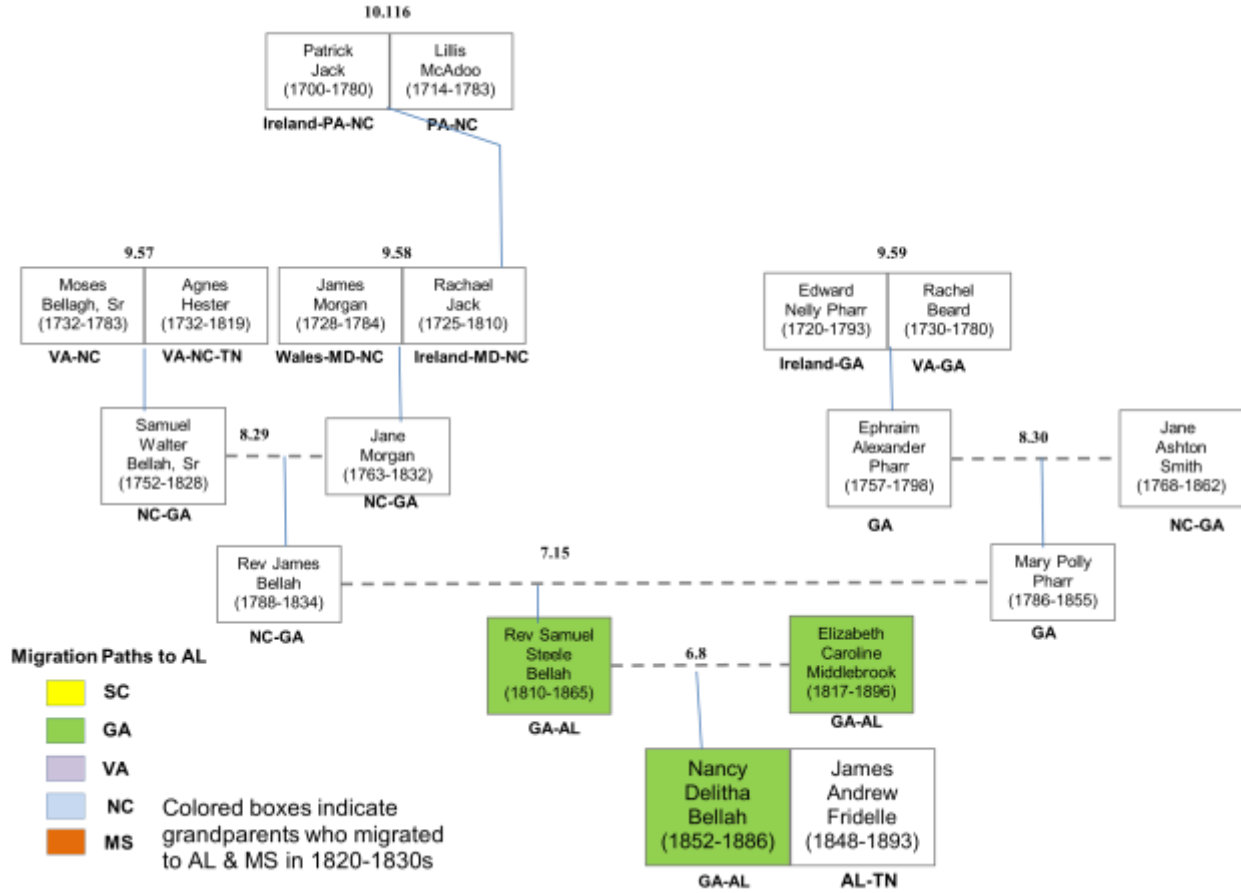
Ann's Ancestral

(Lineage of Paternal GGrandfather James Andrew Fridelle)



Ann's Ancestral Tree

(Lineage of Maternal GGrandmother Nancy Delitha Bellah - p1)



Ann's Ancestral Tree

(Lineage of Maternal GGrandmother Nancy Delitha Bellah - p2)

